

S

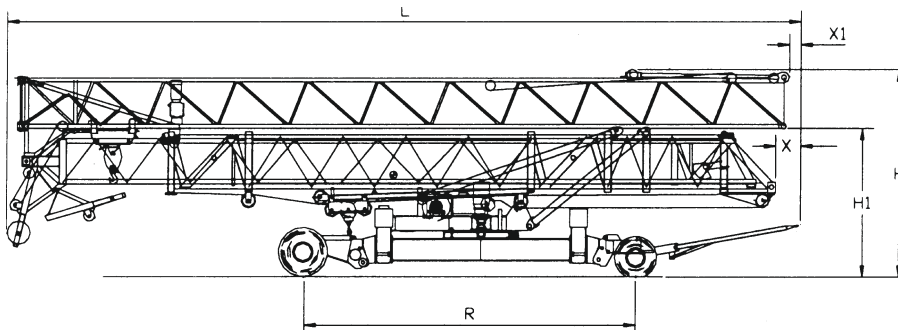
| Type | S | | S / S | | Steilstellung 25° jib-inclination 25°/ position 25° | | | Motorleistung Power Puissance | |
|----------------------|------|--|-------|------|--|------|-------|-------------------------------------|--------|
| | Icon | Icon | m/min | kg | m/min | kg | m/min | | kg |
| PU 9-20/3 | | | 45 | 1100 | 22 | 2200 | 45 | 1100 | 9.0 kW |
| | | | 22 | 2000 | 11 | 4000 | 22 | | |
| | | | 5 | | 2.5 | | 5 | | |
| PU S4-40/2 | | v = 45 / 22 m/min (25° Steilstellung: v = 22 m/min; 1100 kg) | | | | | | 4.0 kW | |
| K 2-55/1 | | v = 25 m/min | | | | | | 2 x 2.2 kW | |
| K SRA 55/3 | | n = 0 → 0.85 min ⁻¹ | | | | | | 4.4 kW | |
| 400 V / 50 Hz / 3 Ph | | Anschlußleistung / Connected power / Puissance installée | | | | | | ~ 22.0 kW | |

s • Poids et mesures

| | | | | | | |
|--|----|-----------|------------|--|-----------------|--------------|
| Konstruktionsgewicht Construction weight Poids de construction | kg | Standard | City-Ausf. | Führerstand Sichthöhe Height of sight from drivers cabin Hauteur de vue de la cabine | m | 22.0 15.0 |
| Gegengewicht Counterweight Contrepoids | kg | 18000 | 26000 | Kabeltrommel (Fahrweg) Cable winder (length of track) Enrouleur (longueur de voie) | m | 60 |
| max. Eckdruck max. wheel load Pression max. par galot | KN | 208 | 275 | Kabelquerschnitt Cable cross section Section du câble | mm ² | 4 x 10 |
| Spurweite / Radstand Track gauge / wheel gauge Ecartement de voie / Empâtement | m | 3.8 x 3.8 | | Schienenprofil Rail profile Profil du rail | | S 33 / S 49 |

port with KSL

25 km/h



| (m) | KSL 20/1 |
|----------------|----------|
| B | 2.5 |
| L | 15.5 |
| H | 4.0 |
| H ₁ | 2.75 |
| R | 7.00 |
| X | 0.815 |
| X ₁ | 0.295 |
| Adapter | 0.3 |

